

### Description

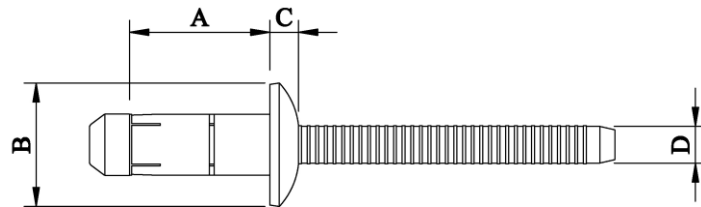
6.0mm Stelock – Dome Head – Steel

Stelock is a high strength structural rivet. The blindside upset is bulbed which helps spread the clamp force so that the joint material is not deformed. The bulbed tail also leaves a neat finish with minimal protrusion on the blind side. The dual locking grooves on the mandrel provide excellent resistance to vibration as well as impressive shear strength and weather resistance.



<b>Material</b>	Body:	Low Carbon Steel	
	Mandrel:	Carbon Steel	
<b>Finish</b>	Body:	Zinc Plated	Cr VI free
	Mandrel:	Zinc Plated	Cr VI free

### Specifications



### Dimensions

Part Code	Diameter	Grip Range	Hole Size	A ±0.1	B ±0.2	C ±0.1	D ±0.1
STDRC-0810	6.00	1.5 – 4.0	6.20	10.00	12.00	1.80	4.00
STDRC-0813	6.00	3.0 – 6.0	6.20	13.00	12.00	1.80	4.00
STDRC-0816	6.00	6.0 – 9.0	6.20	16.00	12.00	1.80	4.00
STDRC-0819	6.00	9.0 – 12.0	6.20	19.00	12.00	1.80	4.00

Part Code	Shear Strength	Tensile Strength
	mandrel in shear plane KN	KN
STDR-0810	4.805	5.393
STDR-0813	5.786	5.393
SRDR-0816	8.433	5.393
SRDR-0819	9.414	5.393

Dimensions and specifications are subject to change without notice.  
Check you distributor for the latest data sheet

As this data is based on multiple tests in various thicknesses we recommend testing the fastener in your application when an exact strength figure is required, or the load to be applied comes close to the published data