

Description

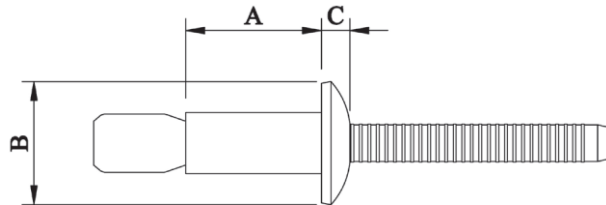
Mega Lock – Dome Head – Stainless Steel

Optimal for applications of varying thickness requiring high shear and tensile strengths from a stainless steel rivet. The dual locking grooves on the mandrel provide excellent resistance to vibration as well as impressive shear strength and weather resistance. This rivet offers excellent hole fill, generous grip range, pressure tight seal, and flush breaking mandrel regardless of material thickness.



Material	Body:	Stainless Steel	AISI 304
	Mandrel:	Stainless Steel	AISI 304
Finish	Body:	Natural	
	Mandrel:	Natural	

Specifications



Dimensions

Part Code	Diameter	Grip Range	Hole Size Max.	A	B	C
SRDU-0604	4.80 (3/16")	1.6 – 6.9	5.00	10.50	9.80	2.10
SRDU-0607	4.80 (3/16")	5.4 – 11.1	5.00	14.50	9.80	2.10
SRDU-0806	6.40 (1/4")	2.0 – 9.5	6.80	14.20	13.00	2.80
SRDU-0810XG	6.40 (1/4")	2.0 – 15.9	6.80	20.50	13.00	2.80
SRDU-1016	7.80 (5/16")	5.0 – 15.0	8.20	21.00	16.00	3.50

Part Code	Shear Strength KN	Tensile Strength KN
SRDU-06**	5.786	4.217
SRDU-08**	11.277	8.924
SRDU-1016	17.651	11.767

Dimensions and specifications are subject to change without notice. Check your distributor for the latest data sheet

As this data is based on multiple tests in various thicknesses we recommend testing the fastener in your application when an exact strength figure is required, or the load to be applied comes close to the published data