

## Description

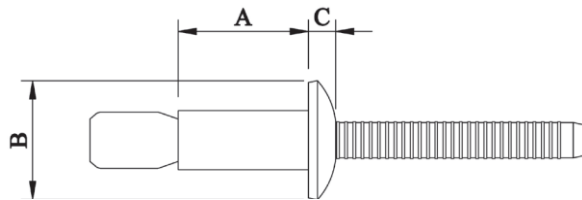
Mega Lock – Dome Head – Steel

Optimal for applications of varying thickness requiring high shear and tensile strengths. The dual locking grooves on the mandrel provide excellent resistance to vibration as well as impressive shear strength and weather resistance. This rivet offers excellent hole fill, generous grip range, pressure tight seal, and flush breaking mandrel regardless of material thickness.



<b>Material</b>	Body:	Low Carbon Steel	
	Mandrel:	Medium Carbon Steel	
<b>Finish</b>	Body:	Zinc Plated	Cr VI free
	Mandrel:	Zinc Plated	Cr VI free

## Specifications



## Dimensions

Part Code	Diameter	Grip Range	Hole Size	A	B	C
SRDR-0604	4.80 (3/16")	1.6 – 6.9	5.00	10.50	9.80	2.10
SRDR-0607XG	4.80 (3/16")	1.6 – 11.1	5.00	14.50	9.80	2.10
SRDR-0806	6.40 (1/4")	2.0 – 9.5	6.70	14.20	13.00	2.80
SRDR-0810XG	6.40 (1/4")	2.0 – 15.9	6.70	20.50	13.00	2.80
SRDR-08E12.6	6.40 (1/4")	8.9 – 22.5	6.70	27.00	13.00	2.80
SRDR-0818HK	6.40 (1/4")	21.0 – 28.5	6.70	33.20	14.90	2.90
SRDR-0822HK	6.40 (1/4")	27.4 – 35.0	6.70	39.60	14.90	2.90
SRDR-1016	7.80 (5/16")	3.0 – 14.5	8.00	21.00	16.00	3.50
SRDR-1212	9.53 (3/8")	3.0 – 14.2	9.80	21.40	20.00	4.50
SRDR-1218HK	9.53 (3/8")	15.9 – 28.5	9.80	35.50	20.00	4.40
SRDR-1218	9.80 (3/8")	14.5 – 28.5	10.00	35.66	19.48	4.40

Part Code	Shear Strength (nom.)	Tensile Strength (nom.)
	KN	KN
SRDR-06**	6.178	5.344
SRDR-08**	12.258	9.806
SRDR-1016	15.690	9.810
SRDR-1212	24.500	16.300
SRDR-1218HK	24.900	17.700
SRDR-1218	24.900 (min.) / (30.070 Test Actual)	17.700 (min.) / (20.750 Test Actual)

Dimensions and specifications are subject to change without notice.  
Check your distributor for the latest data sheet

As this data is based on multiple tests in various thicknesses, we recommend testing the fastener in your application when an exact strength figure is required, or the load to be applied comes close to the published data