

Description

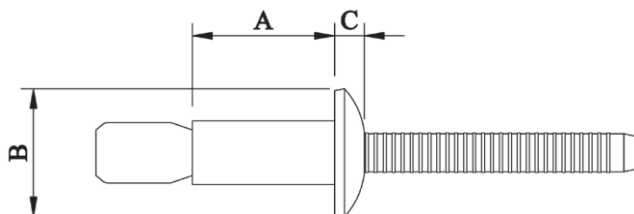
Mega Lock – Dome Head – Aluminium

Optimal for applications of varying thickness requiring high shear and tensile strengths from an aluminium rivet. The dual locking grooves on the mandrel provide excellent resistance to vibration as well as impressive shear strength and weather resistance. This rivet offers excellent hole fill, generous grip range, pressure tight seal, and flush breaking mandrel regardless of material thickness.



Material	Body:	Aluminium	ALMG 5.0
	Mandrel:	Aluminium	7075
Finish	Body:	Bright finished surface	
	Mandrel:	Bright finished surface	

Specifications



Dimensions

Part Code	Diameter	Grip Range	Hole Size ±.2	A	B	C
SRDB-0604	4.80 (3/16")	1.6 – 6.9	5.00	10.50	9.80	2.10
SRDB-0607XG	4.80 (3/16")	1.6 – 11.1	5.00	14.50	9.80	2.10
SRDB-0806	6.40 (1/4")	2.0 – 9.5	6.80	14.20	13.00	2.80
SRDB-0810XG	6.40 (1/4")	2.0 – 15.9	6.80	20.50	13.00	2.80
SRDB-1016	7.80 (5/16")	4.5 – 14.5	8.00	21.30	16.00	3.50
SRDB-1212	9.80 (3/8")	3.0 – 14.2	10.20	21.40	20.00	4.50

Part Code	Shear Strength KN	Tensile Strength KN
SRDB-06**	2.696	2.255
SRDB-08**	5.786	3.962
SRDB-1016	8.633	5.199
SRDB-1212	13.100	8.500

Dimensions and specifications are subject to change without notice.
Check your distributor for the latest data sheet

As this data is based on multiple tests in various thicknesses we recommend testing the fastener in your application when an exact strength figure is required, or the load to be applied comes close to the published data