

### Description

Bulb-Tite - dome head - Steel

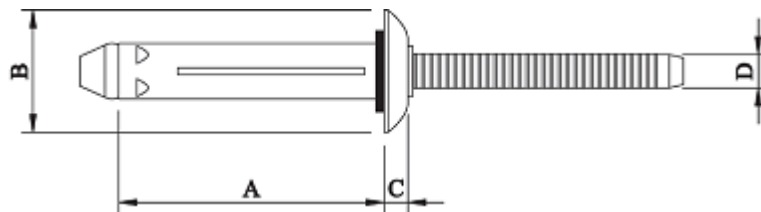
Optimal for applications requiring the tensile load to be spread over a large area, such as when fastening plastics, fibreglass and other composite material. During installation, the rivet body folds into 3 separate legs, creating a large load bearing area, and minimising the possibility of damage to the parent materials. These rivets are supplied with a neoprene washer under the head to provide a weather tight seal.



\*Image indicative only

<b>Material</b>	Body:	Steel
	Mandrel:	Steel
<b>Finish</b>	Body:	Clear Zinc
	Mandrel:	Clear Zinc

### Specifications



### Dimensions

Part Code	Diameter	Grip Range	Hole Size +0.3	A Max	B +0/-0.8	C ±0.2	D
RV6676-0806W	6.40 (1/4")	3.2 – 9.5	6.50	23.90	14.00	2.80	3.90
RV6676-0810W**	6.40 (1/4")	9.5 – 15.9	6.50	30.20	14.00	2.80	3.90

\*\*Only potentially available on bulk request\*\*

Part Code	Shear Strength KN	Tensile Strength KN
RV6676-08**	5.570	4.230

Dimensions and specifications are subject to change without notice.  
Check your distributor for the latest data sheet

As this data is based on multiple tests in various thicknesses we recommend testing the fastener in your application when an exact strength figure is required, or the load to be applied comes close to the published data