

## Description

Bulb-Tite - dome head - Aluminium

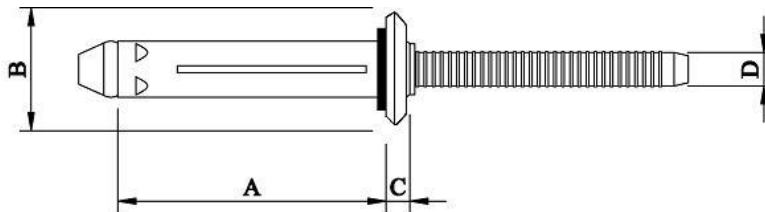
Optimal for applications requiring the tensile load to be spread over a large area, such as when fastening plastics, fibreglass and other composite material. During installation, the rivet body folds into 3 separate legs, creating a large load bearing area, and minimising the possibility of damage to the parent materials. These rivets are supplied with a neoprene washer under the head to provide a weather-tight seal.



\*Image indicative only

<b>Material</b>	Body:	Aluminium	5056
	Mandrel:	Aluminium	2017
<b>Finish</b>	Body:	Bright finished surface	
	Mandrel:	Bright finished surface	

## Specifications



## Dimensions

Part Code	Diameter	Grip Range	Hole Size +0/-0.2	A	B	C	D
RV6604-0604W	4.80 (3/16")	1.6 – 6.4	5.50	19.10	11.90	2.40	2.80
RV6604-0606W	4.80 (3/16")	4.8 – 9.5	5.50	22.20	11.90	2.40	2.80
RV6604-0608W	4.80 (3/16")	7.9 – 12.7	5.50	25.40	11.90	2.40	2.80
RV6604-0610W	4.80 (3/16")	11.0 – 15.9	5.50	28.60	11.90	2.40	2.80
RV6604-0612W	4.80 (3/16")	14.3 – 19.1	5.50	31.80	11.90	2.40	2.80

Part Code	Shear Strength KN	Tensile Strength KN
RV6604-06**	2.700	1.950

Dimensions and specifications are subject to change without notice.  
Check your distributor for the latest data sheet

As this data is based on multiple tests in various thicknesses we recommend testing the fastener in your application when an exact strength figure is required, or the load to be applied comes close to the published data