

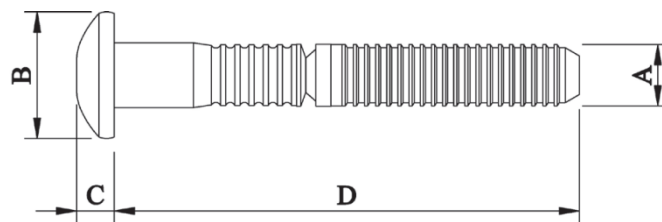
Description

6.4mm Button head lock bolt pin – Stainless Steel

Two piece swage lock fastening system consisting of a pin and a collar. These fasteners offer very high shear and tensile strengths, while being quick and easy to install. These fasteners offer high clamp up force, vibration resistance and corrosion resistance.



Specifications



Dimensions

Part Code	Diameter	Grip Range	Hole Size	A	B	C	D
			-0.2	-0.2	-1.4	Max	
PLB-0802SS	6.40 (1/4")	1.6 – 4.8	6.80	6.60	13.40	3.90	42.00
PLB -0804SS	6.40 (1/4")	4.8 - 7.9	6.80	6.60	13.40	3.90	45.00
PLB -0806SS	6.40 (1/4")	7.9 - 11.1	6.80	6.60	13.40	3.90	48.50
PLB -0808SS	6.40 (1/4")	11.1 - 14.3	6.80	6.60	13.40	3.90	51.50
PLB -0810SS	6.40 (1/4")	14.3 - 17.5	6.80	6.60	13.40	3.90	55.00
PLB -0811SS	6.40 (1/4")	15.8 - 19.0	6.80	6.60	13.40	3.90	58.50

Part Code	Shear Strength kN	Tensile Strength kN
PLB -08**SS	14.500	16.000

Dimensions and specifications are subject to change without notice.
Check your distributor for the latest data sheet

As this data is based on multiple tests in various thicknesses we recommend testing the fastener in your application when an exact strength figure is required, or the load to be applied comes close to the published data

Profast Pty Ltd QLD

P: +61 7 3265 2267

F: +61 7 3265 2257

E: salesQLD@profast.com.au

W: www.profast.com.au

Profast WA Pty Ltd

P: +61 8 9456 5537

F: +61 8 9455 2659

E: salesWA@profast.com.au

W: www.profast.com.au