

Description

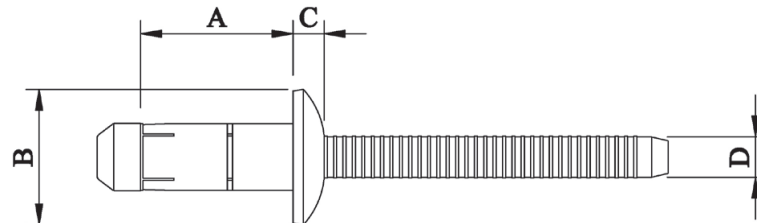
6.4mm (1/4") Orlock - Dome Head 316 (A4) Stainless

Optimal for high shear and tensile strength applications requiring a 316-grade stainless steel fastener. The blindside upset is bulbed which helps spread the clamp force so that the joint material is not deformed. The bulbed tail also leaves a neat finish with minimal protrusion on the blind side. The dual locking grooves on the mandrel provide excellent resistance to vibration as well as impressive shear strength and exceptional weather resistance.



Material	Body:	Stainless Steel	AISI 316
	Mandrel:	Stainless Steel	AISI 316
Finish	Body:	Natural	
	Mandrel:	Natural	

Specifications



Dimensions

Part Code	Diameter	Grip Range	Hole Size	A ±0.2	B ±0.1	C ±0.1	D ±0.05
BLDUA4-08105XG	6.40 (1/4")	2.0 – 4.5	6.60	10.50	13.00	3.00	4.17
BLDUA4-08125XG	6.40 (1/4")	4.0 – 6.5	6.60	12.50	13.00	3.00	4.17
BLDUA4-08145XG	6.40 (1/4")	5.0 – 8.5	6.60	14.50	13.00	3.00	4.17
BLDUA4-08165XG	6.40 (1/4")	7.0 – 10.5	6.60	16.50	13.00	3.00	4.17
BLDUA4-08185XG	6.40 (1/4")	9.0 – 12.5	6.60	18.50	13.00	3.00	4.17
BLDUA4-08205XG	6.40 (1/4")	11.0 – 14.5	6.60	20.50	13.00	3.00	4.17
BLDUA4-08225XG	6.40 (1/4")	13.0 – 16.0	6.60	22.50	13.00	3.00	4.17

Part Code	Shear Strength. Stem in shear kN (min.) / Test (max.)	Tensile Strength kN (min.) / Test (max.)
BLDUA4-08105XG	14.121	8.335
BLDUA4-08125XG	14.513 / 16.798	8.335 / 9.414
Up to		
BLDUA4-08225XG	14.513 / 16.798	8.335 / 9.414

****This is a new range and information may vary****
Test according to ISO14589

Dimensions and specifications are subject to change without notice.
Check your distributor for the latest data sheet

As this data is based on multiple tests in various thicknesses we recommend testing the fastener in your application when an exact strength figure is required, or the load to be applied comes close to the published data