

**Description**

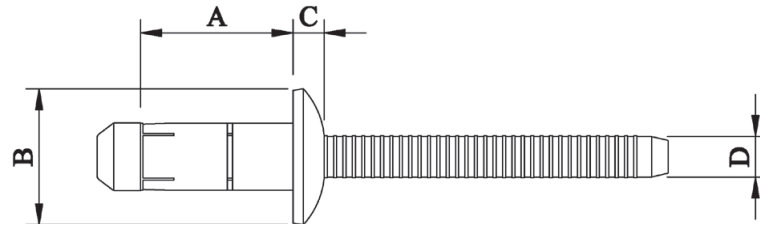
4.8mm (3/16") Orlock - Dome Head 316 (A4) Stainless

Optimal for high shear and tensile strength applications requiring a stainless steel fastener. The blindside upset is bulbed which helps spread the clamp force so that the joint material is not deformed. The bulbed tail also leaves a neat finish with minimal protrusion on the blind side. The dual locking grooves on the mandrel provide excellent resistance to vibration as well as impressive shear strength and weather resistance.



<b>Material</b>	Body:	Stainless Steel	AISI 316
	Mandrel:	Stainless Steel	AISI 316
<b>Finish</b>	Body:	Natural	
	Mandrel:	Natural	

**Specifications**



**Dimensions**

Part Code	Diameter	Grip Range	Hole Size Max.	A	B	C	D
BLDUA4-06090	4.80 (3/16")	1.5 – 3.5	5.00	±0.2	±0.1	±0.1	±0.05
BLDUA4-06115	4.80 (3/16")	3.5 – 6.0	5.00	11.50	9.80	2.20	3.00
BLDUA4-06140	4.80 (3/16")	6.0 – 8.5	5.00	14.00	9.80	2.20	3.00
BLDUA4-06165	4.80 (3/16")	8.5 – 11.0	5.00	16.50	9.80	2.20	3.00
BLDUA4-06190	4.80 (3/16")	11.0 – 13.5	5.00	19.00	9.80	2.20	3.00

Part Code	Shear Strength kN	Tensile Strength kN
BLDUA4-06115	5.395(Min.) / 6.080(Nom.)	4.905(Min.) / 5.295(Nom.)
BLDUA4-06140	6.375(Min.) / 7.355(Nom.)	4.905(Min.) / 5.295(Nom.)
BLDUA4-06165	6.375(Min.) / 7.355(Nom.)	4.905(Min.) / 5.295(Nom.)
BLDUA4-06190	6.375(Min.) / 7.355(Nom.)	4.905(Min.) / 5.295(Nom.)

Dimensions and specifications are subject to change without notice.  
Check your distributor for the latest data sheet

As this data is based on multiple tests in various thicknesses we recommend testing the fastener in your application when an exact strength figure is required, or the load to be applied comes close to the published data