

## Description

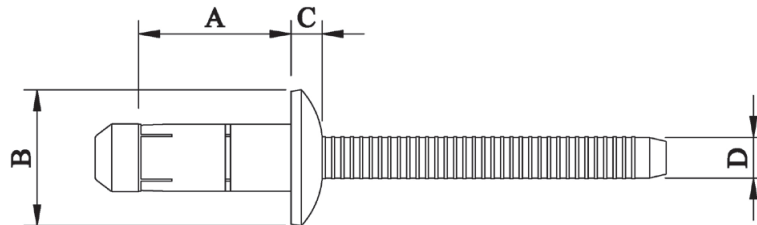
7.8mm (5/16") Orlock - Dome Head - Stainless Steel

Optimal for high shear and tensile strength applications requiring a stainless steel fastener. The blindside upset is bulbed which helps spread the clamp force so that the joint material is not deformed. The bulbed tail also leaves a neat finish with minimal protrusion on the blind side. The dual locking grooves on the mandrel provide excellent resistance to vibration as well as impressive shear strength and weather resistance.



<b>Material</b>	Body:	Stainless Steel	AISI 304
	Mandrel:	Stainless Steel	AISI 304
<b>Finish</b>	Body:	Natural	
	Mandrel:	Natural	

## Specifications



## Dimensions

Part Code	Diameter	Grip Range	Hole Size	A	B	C	D
				±0.2	±0.1	±0.1	±0.05
BLDU-10135XG	7.80 (5/16")	4.0 – 7.0	8.00	13.50	16.00	3.80	5.12
BLDU-10165XG	7.80 (5/16")	7.0 – 10.0	8.00	16.50	16.00	3.80	5.12
BLDU-10195XG	7.80 (5/16")	10.0 – 13.0	8.00	19.50	16.00	3.80	5.12
BLDU-10225XG	7.80 (5/16")	13.0 – 16.0	8.00	22.50	16.00	3.80	5.12

### Shear Strength

Part Code	Stem in shear plane	Stem outside shear plane	Tensile Strength
	kN	kN	kN
BLDU-10135XG	20.103	N/A	12.748
BLDU-10165XG	21.574	N/A	12.748
Up to			
BLDU-10225XG	21.574	N/A	12.748

Dimensions and specifications are subject to change without notice. Check your distributor for the latest data sheet

As this data is based on multiple tests in various thicknesses we recommend testing the fastener in your application when an exact strength figure is required, or the load to be applied comes close to the published data