

Description

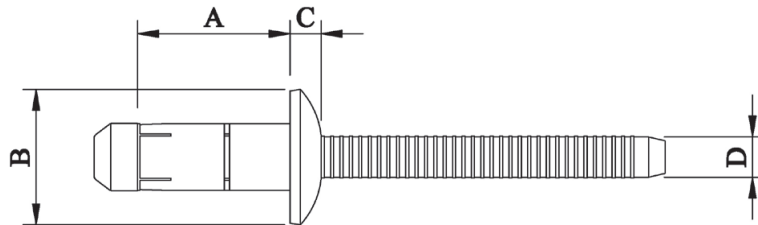
6.4mm (1/4") Orlock - Dome Head - Stainless Steel

Optimal for high shear and tensile strength applications requiring a stainless-steel fastener. The blindside upset is bulbed which helps spread the clamp force so that the joint material is not deformed. The bulbed tail also leaves a neat finish with minimal protrusion on the blind side. The dual locking grooves on the mandrel provide excellent resistance to vibration as well as impressive shear strength and weather resistance.



Material	Body:	Stainless Steel	AISI 304Cu
	Mandrel:	Stainless Steel	AISI 304
Finish	Body:	Natural	
	Mandrel:	Natural	

Specifications



Dimensions

Part Code	Diameter	Grip Range	Hole Size Max.	A	B	C	D
BLDU-08105XG	6.40 (1/4")	2.0 – 4.5	6.60	±0.2 10.50	±0.1 13.00	±0.1 3.00	±0.05 4.17
BLDU-08125XG	6.40 (1/4")	4.0 – 6.5	6.60	12.50	13.00	3.00	4.17
BLDU-08145XG	6.40 (1/4")	5.0 – 8.5	6.60	14.50	13.00	3.00	4.17
BLDU-08165XG	6.40 (1/4")	7.0 – 10.5	6.60	16.50	13.00	3.00	4.17
BLDU-08185XG	6.40 (1/4")	9.0 – 12.5	6.60	18.50	13.00	3.00	4.17
BLDU-08205XG	6.40 (1/4")	11.0 – 14.0	6.60	20.50	13.00	3.00	4.17
BLDU-08225XG	6.40 (1/4")	13.0 – 16.0	6.60	22.50	13.00	3.00	4.17
BLDU-08245XG	6.40 (1/4")	16.0 – 18.0	6.50*	24.50	13.00	3.00	4.17
BLDU-08265XG	6.40 (1/4")	18.0 – 20.0	6.50*	26.50	13.00	3.00	4.17

Part Code	Shear Strength kN (min.) / kN (nom.)	Tensile Strength kN (min.) / kN (nom.)
BLDU-08105XG	12.361 / 13.734	7.848 / 8.340
BLDU-08125XG	13.636 / 14.520	7.848 / 8.340
Up to BLDU-08265XG	13.636 / 14.520	7.848 / 8.340

*Hole size is critical for these lengths. Holes must be as small as possible without deviation or swarf. Testing when approaching edge grip lengths is highly recommended.

Dimensions and specifications are subject to change without notice.
Check your distributor for the latest data sheet

As this data is based on multiple tests in various thicknesses, we recommend testing the fastener in your application when an exact strength figure is required, or the load to be applied comes close to the published data

Dimensions and specifications are subject to change without notice.
Check your distributor for the latest data sheet

As this data is based on multiple tests in various thicknesses, we recommend testing the fastener in your application when an exact strength figure is required, or the load to be applied comes close to the published data

Profast Pty Ltd QLD	P: +61 7 3265 2267	F: +61 7 3265 2257	E: salesQLD@profast.com.au	W: www.profast.com.au
Profast WA Pty Ltd	P: +61 8 9456 5537	F: +61 8 9455 2659	E: salesWA@profast.com.au	W: www.profast.com.au