

Description

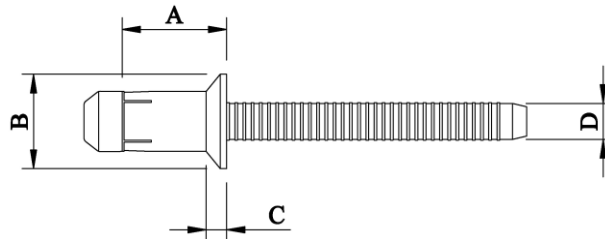
Orlock - Countersunk Head - Steel

Optimal for high shear and tensile strength applications requiring a flush finish. The blindside upset is bulbed which helps spread the clamp force so that the joint material is not deformed. The bulbed tail also leaves a neat finish with minimal protrusion on the blind side. The dual locking grooves on the mandrel provide excellent resistance to vibration as well as impressive shear strength and weather resistance.



Material	Body:	Low Carbon Steel
	Mandrel:	Medium Carbon Steel
Finish	Body:	Zinc Plated Cr VI free
	Mandrel:	Zinc Plated Cr VI free
Angle of Countersink		100 degree

Specifications



Dimensions

Part Code	Diameter	Grip Range	Hole Size ±0.1	A ±0.2	B ±0.1	C ±0.1	D ±0.05
BLDRCSK-06115	4.80 (3/16")	3.5 – 6.0	5.00	11.50	8.50	1.80	3.02
BLDRCSK-06140	4.80 (3/16")	6.0 – 8.5	5.00	14.00	8.50	1.80	3.02
BLDRCSK-08115	6.40 (1/4")	3.8 - 5.8	6.70	11.50	10.0	2.00	4.20
BLDRCSK-08125	6.40 (1/4")	4.8 – 6.8	6.70	12.50	10.0	2.00	4.20
BLDRCSK-08135	6.40 (1/4")	5.8 – 7.8	6.70	13.50	10.0	2.00	4.20
BLDRCSK-08155	6.40 (1/4")	7.8 – 9.8	6.70	15.50	10.0	2.00	4.20
BLDRCSK-08175	6.40 (1/4")	9.8 – 11.8	6.70	17.50	10.0	2.00	4.20

Shear Strength

Part Code	Stem in shear plane	Stem outside shear plane	Tensile Strength
	kN	kN	kN
BLDRCSK-06115	2.941	N/A	3.334
BLDRCSK-06140	3.922	N/A	3.334
BLDRCSK-08115	5.393	N/A	5.491
BLDRCSK-08125	6.374	N/A	5.491
BLDRCSK-08135	7.354	N/A	5.491
BLDRCSK-08155	9.316	N/A	5.491
BLDRCSK-08175	10.296	N/A	5.491

Dimensions and specifications are subject to change without notice.
Check your distributor for the latest data sheet

As this data is based on multiple tests in various thicknesses we recommend testing the fastener in your application when an exact strength figure is required, or the load to be applied comes close to the published data