

Description

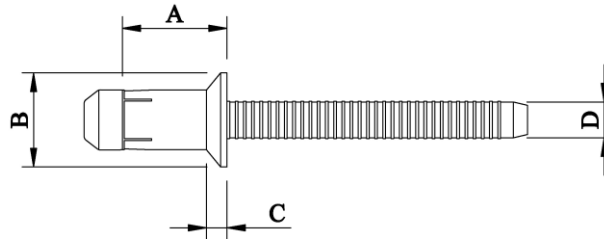
6.4mm (1/4") Orlock - Countersunk Head - Aluminium

Optimal for high shear and tensile strength applications requiring an aluminium rivet with a flush finish. The blindside upset is bulbed which helps spread the clamp force so that the joint material is not deformed. The bulbed tail also leaves a neat finish with minimal protrusion on the blind side. The dual locking grooves on the mandrel provide excellent resistance to vibration as well as impressive shear strength and weather resistance.



Material	Body:	Aluminium Alloy	AlMg 2.5
	Mandrel:	Aluminium Alloy	7075 or equivalent
Finish	Body:	Natural	
	Mandrel:	Natural	
Angle of Countersink		100 degree	

Specifications



Dimensions

Part Code	Diameter	Grip Range	Hole Size ±0.10	A ±0.2	B ±0.1	C ±0.1	D ±0.05
BLDBCSK-08115	6.40 (1/4")	3.8 - 5.8	6.60	11.50	10.0	2.00	4.20
BLDBCSK-08135	6.40 (1/4")	5.8 - 7.8	6.60	13.50	10.0	2.00	4.20
BLDBCSK-08155	6.40 (1/4")	7.8 - 9.8	6.60	15.50	10.0	2.00	4.20
BLDBCSK-08175	6.40 (1/4")	9.8 - 11.8	6.60	17.50	10.0	2.00	4.20
BLDBCSK-08195	6.40 (1/4")	11.8 - 13.8	6.60	19.50	10.0	2.00	4.20
BLDBCSK-08215	6.40 (1/4")	13.8 - 15.8	6.60	19.50	10.0	2.00	4.20
BLDBCSK-08235	6.40 (1/4")	15.8 - 17.8	6.60	19.50	10.0	2.00	4.20
BLDBCSK-08255	6.40 (1/4")	17.8 - 19.8	6.60	19.50	10.0	2.00	4.20
BLDBCSK-08275	6.40 (1/4")	19.8 - 21.8	6.60	19.50	10.0	2.00	4.20
BLDBCSK-08295	6.40 (1/4")	21.8 - 23.8	6.60	19.50	10.0	2.00	4.20

Part Code	Shear Strength. Stem in shear kN (Nom.)	Tensile Strength kN (Nom.)
BLDBCSK-08115	2.745	2.941
BLDBCSK-08135	3.726	2.941
BLDBCSK-08155	4.216	2.941
BLDBCSK-08175 up	4.903	2.941
to -08295	4.903	2.941

Dimensions and specifications are subject to change without notice.
Check your distributor for the latest data sheet

As this data is based on multiple tests in various thicknesses we recommend testing the fastener in your application when an exact strength figure is required, or the load to be applied comes close to the published data