

Description

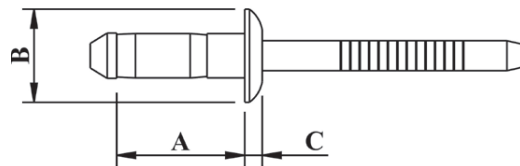
Multi-grip dome head rivet – Stainless/Stainless

Optimal for applications requiring high rivet strength and clamp up force as well as high corrosion resistance. The tail end of the rivet forms into a mushroom head shape when set, providing excellent clamp force and a neat finish.



Material	Body:	Stainless Steel	A2
	Mandrel:	Stainless Steel	A2
Finish	Body:	Natural	
	Mandrel:	Natural	

Specifications



Dimensions

Part Code	Diameter	Grip Range	Hole Size	A ±0.2	B ±0.15	C Max
AVBE-0408	3.20 (1/8")	1.0 – 3.0	3.30	6.70	6.30	1.10
AVBE-0411	3.20 (1/8")	3.0 – 5.0	3.30	9.30	6.30	1.10
AVBE-0414	3.20 (1/8")	5.0 – 7.0	3.30	11.60	6.30	1.10
AVBE-0509	4.00 (5/32")	1.0 – 3.0	4.10	7.30	7.70	1.50
AVBE-0512	4.00 (5/32")	3.0 – 5.0	4.10	9.90	7.70	1.50
AVBE-0516	4.00 (5/32")	5.0 – 7.0	4.10	12.60	7.70	1.50
AVBE-0611	4.80 (3/16")	1.5 – 3.5	4.90	9.30	9.30	1.50
AVBE-0614	4.80 (3/16")	3.5 – 6.0	4.90	11.90	9.30	1.50
AVBE-0618	4.80 (3/16")	6.0 – 8.5	4.90	14.90	9.30	1.50

Shear Strength

Part Code	Stem in shear plane kN	Stem outside shear plane kN	Tensile Strength kN
AVBE-0411	1.598	1.598	2.000
AVBE-0414	1.696	1.598	2.000
AVBE-0418	3.196	1.598	2.000
AVBE-05**	5.197	2.794	3.991
AVBE-06**	5.491	3.893	4.991

Dimensions and specifications are subject to change without notice.
Check your distributor for the latest data sheet

As this data is based on multiple tests in various thicknesses we recommend testing the fastener in your application when an exact strength figure is required, or the load to be applied comes close to the published data