

Description

Max Grip collar – standard & wide flange – Steel

Collar to suit Max Grip two piece swage lock fastening system. Collars are available in standard and wide flange depending on application requirements.



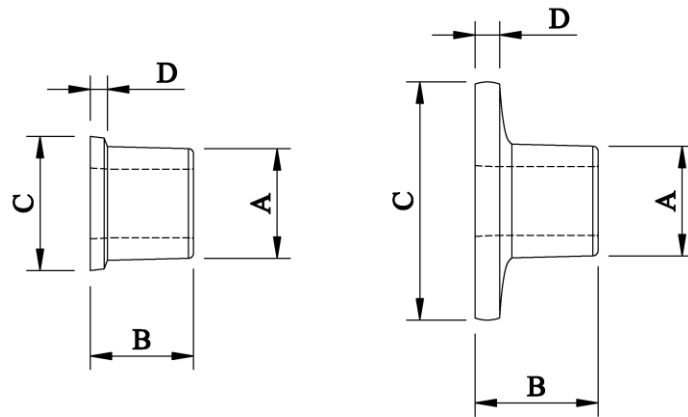
Material

Steel or aluminium

Finish

Steel standard	Delta seal
Steel Wide flange	Passivation with lubrication
Aluminium	Self colour with lubrication

Specifications



Dimensions

Part Code	Pin Diameter	A Min	B Max	C Max	D Max
SPCR-0600	4.80 (3/16")	7.70	7.20	9.80	1.60
SPCR-06WF	4.80 (3/16")	7.70	8.20	19.20	2.90
SPCR-0800	6.40 (1/4")	10.20	9.70	13.10	1.80
SPCR-08WF	6.40 (1/4")	10.20	11.80	25.40	3.70
SPCR-1000	7.90 (5/16")	12.90	11.35	16.40	2.20
SPCR-1200	9.50 (3/8")	15.50	13.20	19.55	2.50

Dimensions and specifications are subject to change without notice.
Check your distributor for the latest data sheet

As this data is based on multiple tests in various thicknesses we recommend testing the fastener in your application when an exact strength figure is required, or the load to be applied comes close to the published data

Profast Pty Ltd QLD

P: +61 7 3265 2267

F: +61 7 3265 2257

E: salesQLD@profast.com.au

W: www.profast.com.au

Profast WA Pty Ltd

P: +61 8 9456 5537

F: +61 8 9455 2659

E: salesWA@profast.com.au

W: www.profast.com.au