

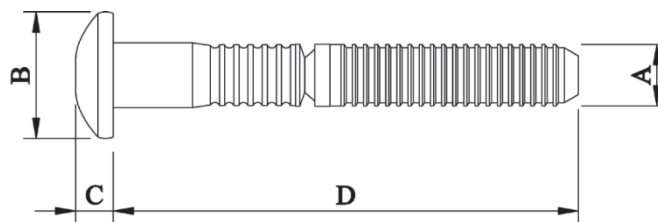
**Description**

7.9mm Button head lock bolt pin – Aluminium

Two piece swage lock fastening system consisting of a pin and a collar. These fasteners offer very high shear and tensile strengths, while being quick and easy to install. These fasteners offer high clamp up force and vibration resistance.



**Specifications**



**Dimensions**

Part Code	Diameter	Grip Range	Hole Size	A	B	C	D
			-0.2	-0.2	-1.7		
PLB-1004A	7.90 (5/16")	3.2 – 9.5	8.40	8.20	16.70	5.10	52.00
PLB-1006A	7.90 (5/16")	6.4 - 12.7	8.40	8.20	16.70	5.10	55.00
PLB-1008A	7.90 (5/16")	9.5 - 15.9	8.40	8.20	16.70	5.10	58.00
PLB-1010A	7.90 (5/16")	12.7 - 19.1	8.40	8.20	16.70	5.10	61.50
PLB-1012A	7.90 (5/16")	15.9 - 22.2	8.40	8.20	16.70	5.10	64.50
PLB-1014A	7.90 (5/16")	19.1 - 25.4	8.40	8.20	16.70	5.10	66.10
PLB-1016A	7.90 (5/16")	22.2 - 28.6	8.40	8.20	16.70	5.10	69.30
PLB-1018A	7.90 (5/16")	25.4 - 31.8	8.40	8.20	16.70	5.10	72.50

Part Code	Shear Strength kN	Tensile Strength kN
PLB-10**A	13.000	12.500

Dimensions and specifications are subject to change without notice. Check your distributor for the latest data sheet

As this data is based on multiple tests in various thicknesses we recommend testing the fastener in your application when an exact strength figure is required, or the load to be applied comes close to the published data